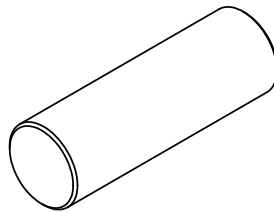
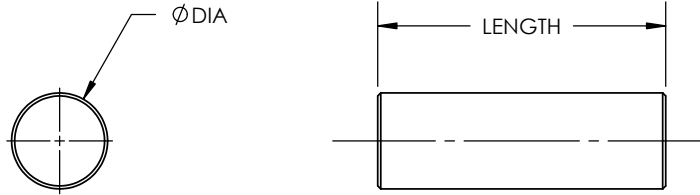


MATERIAL: STAINLESS STEEL 440C, HARDENED TO Rc 58 MIN

REV	ECO NO.	ECO TITLE	DATE
---	-----	-----	--/--/--



PART NUMBER	DIAMETER	LENGTH
187-C	0.1875 ± .0001	1.500
250-C	0.250 ± .0001	1.500
312-C	0.3125 ± .0001	1.500
375-C	0.375 ± .0001	1.500
500-C	0.500 ± .0001	1.500
750-C	0.750 ± .0001	1.500
100-C	1.000 ± .0001	1.500

<p><b>PROPRIETARY INFORMATION</b></p> <p>THE INFORMATION CONTAINED IN THIS DRAWING IS THE SOLE PROPERTY OF MICRO SURFACE ENGR. INC. AND IS FURNISHED FOR INFORMATIONAL PURPOSES ONLY.</p> <p>© 2006 MICRO SURFACE ENGR. INC.</p>	<p>UNLESS OTHERWISE SPECIFIED:</p> <p>DIMENSIONS ARE IN INCHES</p> <p>TOLERANCES:            ANGULAR: 1°            TWO PLACE DECIMAL ±.01            THREE PLACE DECIMAL ±.005</p> <p>INTERPRET GEOMETRIC TOLERANCING PER: ANSI Y14.5</p>		<p><b>Bal-tec</b><sup>TM</sup></p> <p>1550 E. SLAUSON AVE            LOS ANGELES, CA 90011</p>			
			<p>TITLE            CYLINDER</p>		<p>NUMBER            SEE TABLE</p>	<p>REV            01</p>
			<p>ENGINEER            GENE GLEASON</p>	<p>DWN BY            RJV</p>	<p>DATE DRAWN            12/02/06</p>	<p>SIZE            A</p>